



NBS Plus

riba
product
selector

vuba

Vuba Resin Bound Surfacing

We are a resin manufacturer and aggregate processor that supplies resin bound kits.



**#1 Rated
Paving Supplier**
Trustpilot



**15-year
warranty**



**Low
maintenance**



Literature Code:
WOTW.BRCH.2020.01

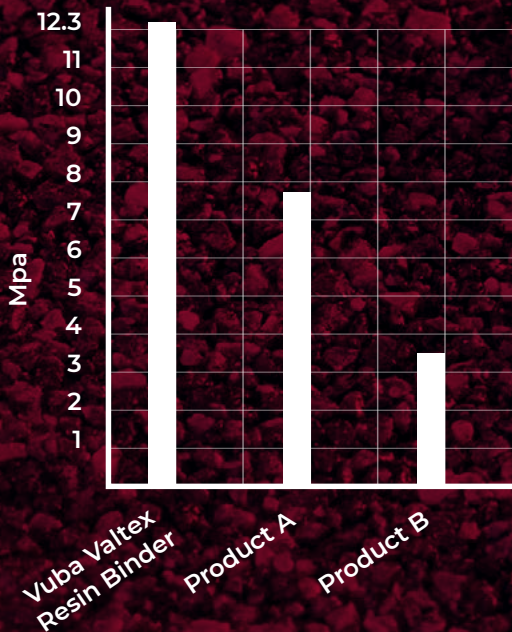
Vuba is a leading manufacturer of resin systems.

Our resin binder is formulated and produced at our Beverley production facility.

Our binder is subject to intensive testing – see some highlights from our results



Average Tensile Strength (Mpa)



Testing Results

67.2% ELONGATION AT BREAK
18.8 TEAR RESISTANCE



Contents

| | |
|----------------------------------|-------|
| About Vuba Resin Bound Surfacing | 2-3 |
| Vehicle Traffic Resin Bound | 4-11 |
| Be Smart about Resin Bound | 12-15 |
| Paths and Patio Resin Bound | 16-23 |
| Meet your Vuba Team | 24 |

4 Product Ranges



Vehicle Traffic: Wonders of the World

Page 4



Vehicle Traffic: Classic Driveway

Page 8



Pedestrian Traffic: Wonders of the World

Page 16



Pedestrian Traffic: Landscaper Kits

Page 20



Sample cases

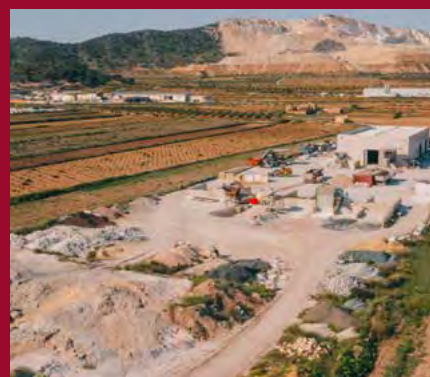
Each of the above ranges are available in their own carry case. Enquire with us for more details.



Wonders of the World

Driveable

The Wonders of the World resin bound colours are a selection of exclusive, premium-quality aggregates that we source worldwide. These new vibrant colours are available for the first time in the UK, only from Vuba.



Exclusive to Vuba! Traditionally resin bound aggregates are sourced from UK wholesalers. The Wonders of the World range includes creams from El Toco Mountain in Spain, and genuine blue greys from Sierra de Guadarrama. These incredible colours are now available to you for the first time exclusively from Vuba.



Uniquely, Wonders of the World systems contain four sizes of aggregate. Why? For a stronger, more compact surface finish. See our 'Smart about Resin Bound' guide on pages 12 to 15 to find out why this is so important and learn more about how Vuba ensure we are at the forefront of resin bound technology.



The aggregate used in our systems is uniquely crushed to a semi-angular shape for ease of compaction. The feel of a Wonders of the World aggregate under the trowel is completely different to standard resin bound surfacing – and you can see the difference!



**15-YEAR
WARRANTY**

Vehicle Traffic

Wonders of the World



Manhattan VT



Poseidon VT



Scandinavian VT



Siberian Granite VT



Vesuvian Granite VT



Orpheus VT

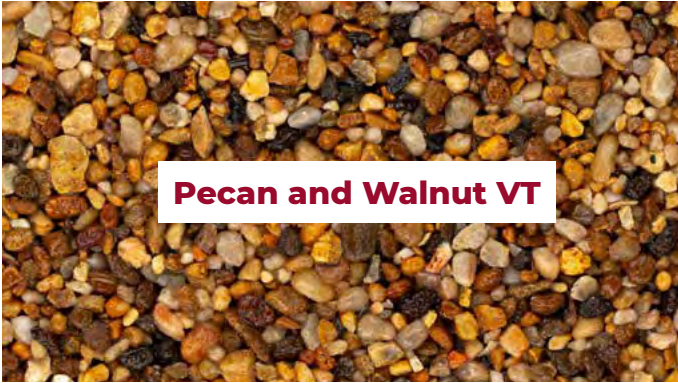


Metropolis VT



Palazzo VT

Vehicle Traffic
Wonders of the World





The Classics Range

Driveable



Resin bound surfacing has surged in popularity in recent years. These colours have been hugely popular since the launch of resin bound surfacing in the UK 20 years ago.

Seamless, hard wearing and with a fantastic choice of colours – it's easy to see why resin bound is the fastest-growing paving surface in the UK.

We have manufactured and sold resin bound systems since 2009.

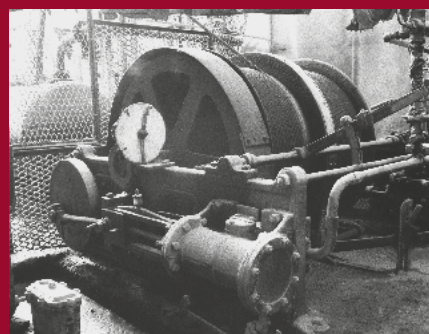
We are a Leading Distributor of the Grantex Surfacing resin bound aggregates, manufactured by Long Rake Spar in Youlgrave UK – the original processor of resin bound aggregates in the UK.



Grantex Distributors – we are official distributors of Grantex Surfacing specialist dried aggregates.



Long Rake Spar has processed resin bound aggregates since 1988.



Long Rake Spar Production Equipment in 1970s.



**15-YEAR
WARRANTY**

Vehicle Traffic

Classic Driveway



Palladium VT



Black Granite VT



Green Slate VT



Aspen VT



Piano VT



Alaskan Tundra VT



Nordic Storm VT



Yorkshire Tweed VT



Vehicle Traffic
Classic Driveway



Be Smart about Resin Bound

Resin bound surfacing is an extremely durable, seamless polyurethane resin screed which can achieve a life expectancy of 25 years.

To ensure you receive the benefit of a high-quality resin bound system, read through our checklist!

Follow our guidelines and you will be pleased you made the decision to pave your home with a modern, seamless, beautiful and permeable surface such as resin bound surfacing.

Here is our 6-Point Checklist:

1. Resin Size – It Matters

THE TEST

Cube strength tests carried out in accordance with BS EN 1290 – 3: 2009 to determine the difference in compression strength between a resin cube made using 7.5kg binder to aggregate ratio (Vuba Standard) and 6.5kg binder to aggregate ratio (Common Industry Standard).

RESULTS?

The strength of the resin bound system is reduced by 19% when using a 6.5% resin to aggregate ratio system.

WHAT DOES THAT MEAN?

Not all resin bound systems use the same amount of resin. Vuba only manufacture and supply products at a 7.5% ratio – recognised as the industry gold standard. By using a lower ratio you increase the chances of your driveway failing.

This testing is the reason our contractor resin kits are 7.5kg. Make sure you are buying a 7.5kg kit if you want the strongest, most long-lasting resin bound system.

Tests commissioned by Vuba Building Products Limited and carried out by Humberside Materials Laboratory Ltd. Results available upon request.



2. Binding Aggregates

THE TEST

Cube strength tests carried out in accordance with BS EN 1290 – 3: 2009 to determine the difference in compression strength between a resin cube made with the inclusion of a binding aggregate (Vuba Standard) and without (Common Industry Standard).

RESULTS?

The strength of the resin bound system is reduced by 24% when a binding aggregate is not used.

WHAT DOES THAT MEAN?

The lack of a binding aggregate significantly increases the risk of stones coming loose or 'stone loosening' and ultimately increases the chance of your driveway failing.

DID YOU KNOW?

A combination of points 1 and 2 can make a difference of 61% to the strength of your resin bound system.

Tests commissioned by Vuba Building Products Limited and carried out by Humberside Materials Laboratory Ltd. Results available upon request.



Choose Vuba for Peace of Mind

Our systems are formulated, independently tested and supplied to our specification each time.

VT = A system suitable for vehicle traffic

PP = A system suitable for pedestrian traffic only

You can be assured you are receiving a system which is in accordance with FeRFA Resin Flooring Association guidelines, and has been independently tested.



3. Non-UV is Very Unstable

THE TEST

This is quite easy to identify visually – how a resin bound surface changes colour with exposure to sunlight.

RESULTS?

Non-UV stable resin, or aromatic resins as they are known in the industry, don't just fade over time - they discolour entirely within a short period.

WHAT DOES THAT MEAN?

Well, you know those lovely tones and shades of colour you chose? They're now all one colour: dark yellow.

DID YOU KNOW?

Contractors may not make you aware of the resin they are using at the quotation stage – so it's very important to check.



4. Not All Aggregates are Equal

THE TEST

Fragmentation of Aggregate in accordance with BS EN 1097-2: 2010 - Annex B.

RESULTS?

We regard aggregates with a value of 50 or higher as unsuitable for vehicle traffic. All Vuba aggregates achieve a value of 35 or lower.

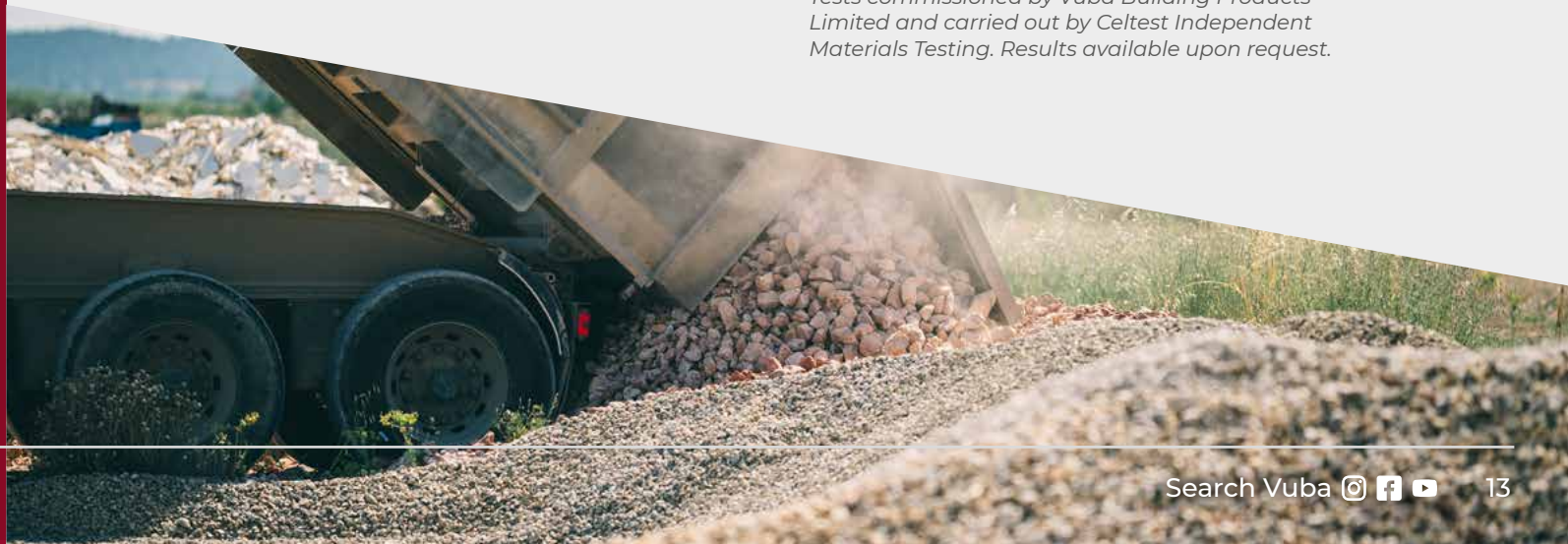
WHAT DOES THAT MEAN?

Some aggregates which have been supplied in the industry for driveways in recent years we regard as not suitable for vehicle traffic. Vuba is a single-source resin manufacturer and an importer and processor of aggregates – we test each component of our systems to ensure you receive a product that lasts.

DID YOU KNOW?

Marble aggregates outperform granite aggregates in most circumstances, although results vary for each type of stone.

Tests commissioned by Vuba Building Products Limited and carried out by Celtest Independent Materials Testing. Results available upon request.



5. Resin Binder from the Manufacturer

THE TEST

Hardness (Shore A Hardness), Binder Tensile and Elongation Test (ISO 527-2)

RESULTS?

Independent test results demonstrate that the Vuba binder performs exceptionally when compared to alternatives on the market. You can see our results below.

| | |
|----------------------|----------|
| Tensile Strength: | 12.3 Mpa |
| Elongation at Break: | 67.2% |
| Tear Resistance: | 18.8 |

WHAT DOES THAT MEAN?

This means you are using a premium-quality resin binder, direct from the manufacturer. And you should have the utmost confidence in your resin bound system.

DID YOU KNOW?

A significant majority of resin kit suppliers are supplying a 'white label' resin that they purchase from various manufacturers – that is why it is extremely rare for suppliers to publish the mechanical properties of their binders (adjacent). Vuba is one of few independent manufacturers who supply direct to the trade and the public.

Tests commissioned by Vuba Building Products Limited and carried out by Element Materials Technology. Results available upon request.



6. Aggregate Blend

THE TEST

Particle Density to BS EN 1097-6: 2013 Clause 8 and Compression Test to BS EN 1290 – 3: 2009.

RESULTS?

An aggregate blend made of a range of aggregates from 1mm to 6mm is significantly stronger than aggregate blends made using a single size.

WHAT DOES THAT MEAN?

A more compact surface, more resistant to stone loosening and with enhanced compressive strength – which is essential when applying to a surface which will be subject to vehicle traffic.

DID YOU KNOW?

Vuba uses 4 different grades of sizes in our resin bound driveway products – 50% more than the industry standard of 2 grades of sizes.

Tests commissioned by Vuba Building Products Limited and carried out by Celtest Independent Materials Testing. Results available upon request.



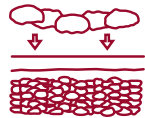
Honorary Mentions:

These 6 factors are what determine the strength of your resin bound screed – and they are vitally important. But there are other site-based factors which can influence the success of your project as well!



1. APPLICATION TECHNIQUE

All of the above will not count for much if the resin surface is not applied at the correct depth. 15mm for pedestrian traffic and 18mm for vehicle traffic is the minimum we would recommend at any point of the installation.



2. SUB-BASE AND BASE

Solid sub-base of MOT, and a suitable base for application of resin bound surfacing. The optimal base is open-grade Tarmacadam using a 14mm or 20mm-diameter stone. However, other strong bases which are not susceptible to cracking can be used as well, such as the Vubagrid system – our Heavy Duty Cellular Paving Grid.



3. WEATHER CONDITIONS

Good weather, or lack of inclement weather, is essential when installing resin bound surfacing. Excessive moisture from rain, frost, dew or snow will react with the resin and significantly weaken the strength of the system.

Vuba Vs The Rest (Driveway System)

VUBA SYSTEM

| | |
|----------------------|---|
| 18mm Depth | ✓ |
| Tarmacadam Base | ✓ |
| Blend of Sizes | ✓ |
| Binding Aggregates | ✓ |
| 7.5kg Resin Binder | ✓ |
| Quality Resin Binder | ✓ |

DON'T BE FOOLED BY

| | |
|----------------------|---|
| 15mm Depth | ✗ |
| Paving Slabs Base | ✗ |
| Single-Size Stone | ✗ |
| No Binding Aggregate | ✗ |
| 6.5kg Resin Binder | ✗ |
| Poor-Quality Binder | ✗ |

93% ESTIMATED REDUCTION IN LIFE EXPECTANCY BETWEEN THE TWO RESIN BOUND SYSTEMS LISTED.





Wonders of the World

Pedestrian

The same fantastic colours as the driveable grade, but with a lower performance requirement it's possible to use even more decorative and beautiful stone blends. These vibrant colours are sourced from around the world to give you something special for your home or commercial project!



**15-YEAR
WARRANTY**

Pedestrian Traffic

Wonders of the World



Poseidon Marble PP



Manhattan Marble PP



Scandinavian Marble PP



Orpheus Marble PP



Palazzo Marble PP



Metropolis PP

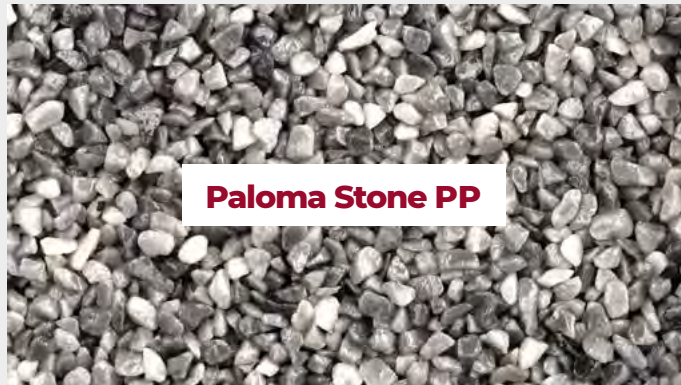


Hardwick Castle PP



Manor Path Grey PP

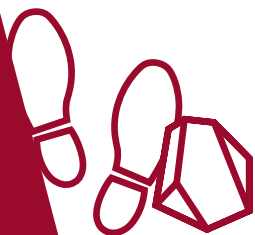
Pedestrian Traffic
Wonders of the World



Landscaper Kits

Pedestrian Traffic

Resin bound kits without the need for specialist equipment!
These kits are perfect for smaller landscaping projects such as pathways and patios. Each kit contains a 25kg aggregate and a 2-part resin kit – ready to mix together and trowel apply.



**15-YEAR
WARRANTY**

Pedestrian Traffic Landscaper Kits



Carrara Grey



Ocean Grey



Paloma Grey



Paloma Grey Fine



Nero Grey



Nero Grey Fine



Pedestrian Traffic

Landscaper Kits



Tuscan



Tuscan Fine



Blanco White



Autumn Quartz



Rojo Alicante



Rojo Alicante Fine



Red Granite



Amber Gold



Rosa Valencia



Dorset Gold

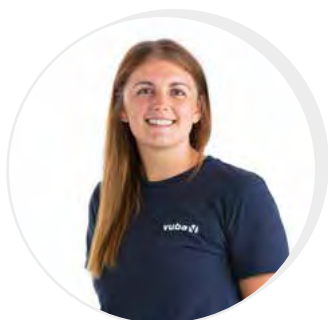
No mixer needed

These kits are capable of mixing with a 'drill and paddle' in a drum or durable container, around 30 litres in capacity. These smaller kits are perfect for smaller projects and those looking to use resin bound for the first time.



Meet your Resin Bound Team

We love to work with contractors and customers.
Contact one of our team for quotations, samples,
technical help or general advice.



Lucy Ackroyd

Account Manager
lucy.ackroyd@vubagroup.com



Paul Cooper

Account Manager
paul.cooper@vubagroup.com



Emily Wheeldon

Sales & Customer Service
emily.wheeldon@vubagroup.com



Jade Tyson

Customer Experience
jade.tyson@vubagroup.com



Jade Marie

Logistics Manager
jade.marie@vubagroup.com



Tim Watson

Business
Development Manager
tim@vubagroup.com



Sean Scott

Technical Director
sean.scott@vubagroup.com

vuba 

+44 (0) 1482 778897
sales@vubagroup.com
vubaresinproducts.com



Vuba Building Products Ltd
Units B2-B4, Grovehill
Industrial Estate, Annie Reed
Road, Beverley, HU17 0LF



Vuba Distribution Centre
Old Hall, Catwick, HU17 5PR



Search Vuba